



Phottix®
bpoftix®



Phottix Odin Z Operating System

Lighting from A to Z

From day one, we have had several goals, the first being to make working with light as simple and easy as possible for photographers at every level.

To make things more simple, more intuitive, our team has invested two years in developing the next generation of the Phottix products. The key to this simplicity is the new Odin Z Operating System.

Odin Z keeps the most-loved Phottix features and adds cutting-edge options and technologies. Best of all, it's available to all Phottix users through a firmware upgrade. We believe in moving forward while leaving no one behind.

The Odin Z System features:



Auto-Metering



Auto-Switching



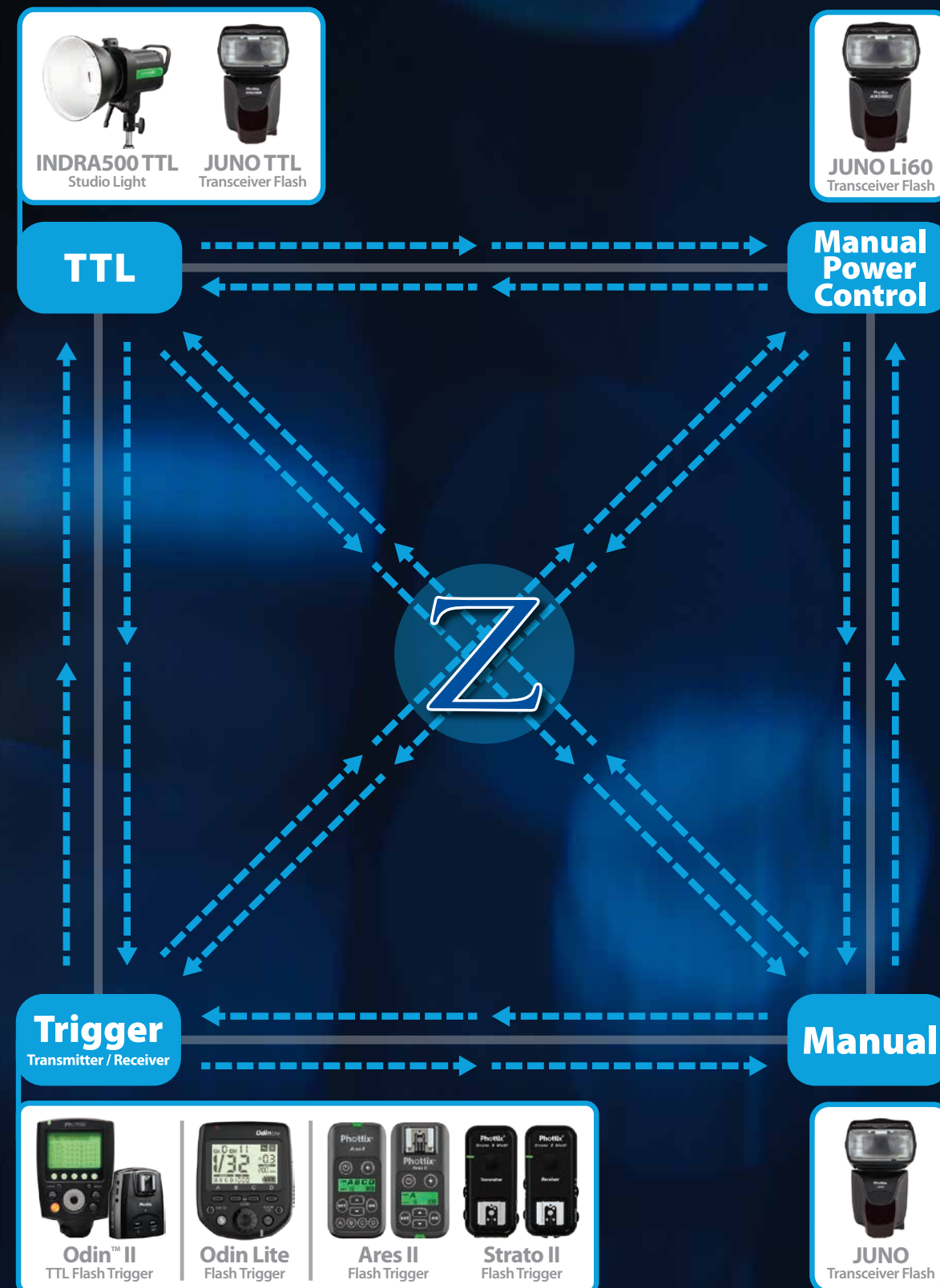
Real-Time Power Control

- Auto-Switching** - Every TTL system is built into every product
- Auto-Metering** - Phottix products will tell you what power level to set
- Real-Time Displays** - Power levels displayed on products and triggers
- Simplified** - Software and hardware protocols have been upgraded and streamlined for easier use

Phottix's technology has evolved and we want to ensure our customers can use this technology to evolve their skills and advanced their hobby or career. No matter how challenging the image they set out to create, working with Phottix gear should be anything but challenging.

From hobbyists to seasoned professionals Phottix provides lighting solutions from A to Z.

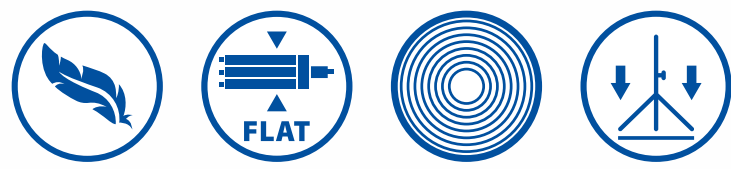
Phottix®





Padat Carbon 198

Carbon Fiber Compact Light Stand



Light-Weight

Packs Flat

9 Layers Carbon

Stable

The Phottix Padat Carbon Fiber Compact Light Stand (198cm/78") is the world's lightest light stand weighing in at a remarkable 596 grams*! When collapsed, the 19-inch Padat Carbon 198 Light Stand fits in any carry-on luggage or gear bag.

While compact, the Phottix Padat Carbon Fiber rises to any occasion, extending to 6.5 feet when fully extended, topped with a 1.4" threaded mount.

The flat-folding Phottix Padat Carbon Fiber is perfect to location and traveling photographers. It folds at making it easy to pack and its weight barely making a dent in your luggage allowance.

88218 Phottix Padat Carbon Fiber Compact Light Stand (198cm/78")
Patent Number: ZL 201730228322.6



Padat 200 / Padat Carbon 200

Light Stand

In Malay - Padat means sturdy and reliable - and that's just what the Phottix Padat is. The Padat folds flat, making it easier to pack and take on location. It is 1/3 smaller - easier to fit in bags and cases.

The Phottix Padat Carbon 200 features:

- Removable carbon fiber center post
- Center post can be used as hand-held boom or monopod
- Adjustable leg for use on uneven surfaces
- Light-weight, folds flat

The Phottix Padat200 features:

- Extends to 2m
- Packs Flat
- Great for location work
- Perfect for hot shoe flashes

1. 88216 Phottix Padat Carbon 200 Light Stand (200cm/79")
Patent Number: 201820254340.0 / ZL 201730228322.6
2. 88215 Phottix Padat Compact Light Stand (200cm/79")





Phottix Odin Z
Operating System



INDRA500II TTL

Studio Light

Powered by Odin Z



Auto-Metering



Auto-Switching



Real-Time Power Control



1/8000s SYNC SPEED



1/1 to 1/128 8 STOPS ADJUSTMENT

Phottix's landmark 500 Watt TTL Studio Light has been the "go-to" location and studio light for serious photographers. Phottix is proud to present the Phottix Indra500II TTL- the next generation featuring Odin Z OS functions.

The Phottix Indra500II TTL bring new features to the table:

- Improved battery technology. Get 500 full power shots per charge - a 20% increase over the original Indra500 TTL.
- Upgraded hardware
- Odin Z OS Built-in

SKU:00341 Phottix Indra500 II TTL Studio Light and Battery Pack Kit (EU&UK)
SKU:00342 Phottix Indra500 II TTL Studio Light and Battery Pack Kit USA
SKU:00343 Phottix Indra500 II TTL Studio Light and Battery Pack Kit AU
SKU:00344 Phottix Indra500 II TTL Studio Light and Battery Pack Kit TW
SKU: 00306 Phottix Indra500 TTL Studio Light and Battery Pack Kit (EU&UK)
SKU: 00307 Phottix Indra500 TTL Studio Light and Battery Pack Kit USA
SKU: 00309 Phottix Indra500 TTL Studio Light and Battery Pack Kit AU
SKU: 00303 Phottix Indra500 TTL Studio Light and Battery Pack Kit TW

With the Odin Z Operating System, the Indra500II TTL gets the same great feature set as other Phottix products including:

- All-in-one Auto Switching. TTL systems for Canon, Nikon, Sony and Pentax built-in. The Indra500II will automatically adjust to the system being used*
- Auto-Metering. Can be used on as a light meter*
- Real-time manual power display*



When used with the Phottix Odin II TTL Flash Trigger for Canon, Nikon, Sony or Pentax you have the ultimate in control. Eight stops of power adjustment - from full power to 1/128 in Manual Mode and +/- 3 EV in TTL mode, with High Speed Sync shutter speeds up to 1/8000s.

Manual only shooters can use the new Phottix Odin Lite to control the Indra500II TTL from any camera system. Perfect for photographers that switch between formats and systems.

* On compatible cameras, when used with the Odin II and Odin Z Operating System.



Photo: Tony Clapp
Tonyclapp.com

Indra500 New: AC Power Module

The Phottix Indra500 AC Module powers the Phottix Indra series - Great for use in the studio where batteries are not needed. The Indra500 AC Module can power two Indra500 TTL Studio Lights or hot shoe flashes in 100V-240V environments.



Features:

- Use your Phottix Indra500 lights with AC Power
- Power two studio lights or flashes
- Fast 1.5s recycle time
- 100V-240V compatible

Indra500 AC Module Technical Specs:

Module power output:	14.8VDC 10A max
AC/DC adapter input voltage:	100~240VAC, 50/60 Hz 2.5A
AC/DC adapter output voltage:	17V DC 9.9A
Recycling time:	1.5sec Indra 500 @ 1/1 Flash power (single output)
Module size:	121 x 61 x 58mm
Module weight:	165g
AC/DC adapter size:	178 x 80 x 45mm
AC/DC adapter weight:	716g

SKU: 01011 Phottix Indra AC Module (EU&UK)
SKU: 01012 Phottix Indra AC Module USA
SKU: 01013 Phottix Indra AC Module AU



Odin™ II

TTL Flash Trigger Transmitter

Powered by Odin Z



Odin Z OS



Auto-Switching



Auto-Metering



TTL FLASH TRIGGER



1/8000s SYNC SPEED

The Phottix Odin II TTL Flash Trigger remains the world's best triggering system, boasting new features and technologies from the Phottix Odin Z Operating System.

Fast and easy to use, the Odin II now features auto-metering and auto-switching features when used with compatible Phottix products.

SKU: 89074 Phottix Odin™ II TTL Flash Trigger Transmitter For Canon
SKU: 89069 Phottix Odin™ II TTL Flash Trigger Transmitter For Nikon
SKU: 89079 Phottix Odin™ II TTL Flash Trigger Transmitter For Sony
SKU: 89080 Phottix Odin™ II TTL Flash Trigger Transmitter For Pentax
SKU: 89072 Phottix Odin™ II TTL Flash Trigger Receiver For Canon
SKU: 89067 Phottix Odin™ II TTL Flash Trigger Receiver For Nikon

Phottix Odin II Receivers are available separately for Canon and Nikon.

Receivers are not available for the Odin II for Sony or Pentax transmitters.



Odin II TTL Flash Trigger Receiver



Odin II TTL Flash Trigger Transmitter

Features:

- 5 groups A, B, C, D, E, , 32 Channels
- Programmable Digital ID Code
- Group buttons and control dial for fast changes
- TTL Power Control +/- 3EV
- Manual Power Control 1/1 to 1/128
- High Speed Sync*, Second Curtain Sync (Nikon, Sony only)
- AF Assist Light
- Compatible with Phottix Odin Z Operating System.
- Controls compatible Phottix products in Manual and TTL modes.



JUNO TTL

Transceiver Flash

Powered by Odin Z



Odin Z OS



Auto-Metering



Auto-Switching



Elinchrom EL-Skyport Receiver



ARES II RECEIVER

The Juno TTL has everything you expect from a TTL hot shoe flash – a Guide Number of 60 with TTL, Manual and Stroboscopic modes, and an adjustable flash head that can zoom to 200mm.

Beyond hot shoe flash function, the Phottix Juno TTL Flash is a powerful partner for the professional photographer.

Features:

- All-in-one Auto-Switching. TTL systems for Canon, Nikon, Sony and Pentax built-in into every Juno TTL. The flash will automatically adjust to the system being used.*
- Auto-Metering. Can be used on or off camera as a light meter. The Juno TTL will tell you which power level to set.
- Real time manual power display*
- Can be used to control other compatible products in the Phottix ecosystem.

* When used compatible Phottix Odin II Transmitters

**Rx Mode compatible with Elinchrom EL-Skyport Transmitters: Transmitter PRO, Transmitter PLUS and Transmitter Speed



The Juno TTL is the perfect flash for wedding and event photographers that need flexibility of Auto-Switching for second shooters using a different camera system. Also great for educators in a classroom setting.

For those new to lighting, the Juno TTL Auto-Metering functions makes it super-easy to get started using flash.

Phottix JUNO TTL Transceiver Flash Tech Specs

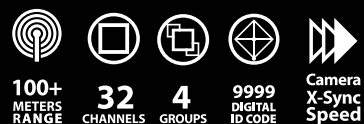
Guide No:	GN60 at 200mm zoom
Wireless range:	not less than 100m
Wireless Mode:	OdinII Tx, OdinII Rx, AresII Rx, SKYPORT Rx, OP Tx, OP Rx, S1 Rx
Battery power:	AA (LR6) x 4
Recycling time:	@ Full power: <4sec
Rotation:	180 degree left and right ; Up, Down: -7 to 90 degree
Dimensions:	79 x 60 x 193mm
Weight:	430g (not include battery)

Pre-production specifications.

SKU: 80100 Phottix Juno TTL Transceiver Flash (For Canon)



Odin Lite Flash Trigger



The Odin Lite Flash Trigger is the latest in the Phottix line-up of flash triggers and provides a link between Phottix's TTL and Manual families of products.

The Phottix Odin Lite is an all-in-one manual trigger, giving users the ability to control compatible Phottix products from any camera system.

Features:

- Real-time remote power control and triggering with compatible Phottix lighting products*
- Works with any camera system
- 4 Groups and 32 channels

Using more than one camera system? Phottix has you covered. The Odin Lite allows photographers to control their lights from any camera.



Featuring 4 control groups, 32 channels and Phottix's Digital ID System, the Phottix Odin Lite is a cutting-edge solution for photographers using multiple systems in their workflow.

Odin Lite Flash Trigger Technical Specs:

Frequency:	2.4 GHz
Range:	100+m
Channels:	32 channels
Groups:	4 groups- A, B, C, D
Batteries:	2 x AA Alkaline batteries / 2 x NI-MH batteries
Max. sync speed:	Sync speed of your camera (Please refer to camera manual)
Dimension:	84.1 x 68.3 x 58.5 mm (L x W x H)
Weight:	115g without batteries

* with compatible Phottix lighting products

SKU: 89090 Phottix Odin Lite Flash Trigger Transmitter

Photo: Nikos Pekridis
Photopek.com



JUNO Li60

Transceiver Flash
Powered by Odin Z

Light all day and night



Odin Z OS



ARES II
Receiver



HSS
SUPPORT



LITHIUM
BATTERY



REMOTE
POWER-CONTROL

The new Juno Li60 Flash packs Professional power and super-fast recycle times in a manual flash.

With a 3200mAh li-ion battery, the Phottix Juno Li60 with serious power for serious professionals, super-charged with Phottix's new Odin Z Operating System.

Features:

- Long-lasting Lithium-Ion Battery
- Fast recycle times
- Pair with Phottix Odin Lite for the ultimate in manual control on any camera system
- Real time manual power display
- Compatible with other Phottix Ecosystem products*

* Built-in power control with Phottix Odin II or Odin Lite, triggering only with Phottix Ares II or Strato II Triggers

SKU: 80310 Phottix Juno Li60 Transceiver Flash

When paired with the Phottix Odin Lite controller, the Juno Li60 can be controlled and triggered from any camera system. Perfect for photographers shooting with different camera bodies, trigger with Odin II for HSS.

This Odin Lite and Li60 combo is the perfect travel companion for photographers on the road. Shoot all day and night and never worry about missing a shot. Power, Speed and Control – the busy location photographers new workhorse.

Juno Li60 Transceiver Flash Technical Specs:

Guide No:	GN60 at 200mm zoom
Wireless range:	not less than 100m
Wireless Mode:	OdinII TX, OdinII RX, AresII RX, S1/S2 RX
Battery power:	Li-ion battery 7.4V 3200mAh
Battery life:	Up to 800 cycles @ full power
Recycling time:	Up to 1.5 Seconds @ full power
Rotation:	180 degree left and right ; Up, Down: -7 to 90 degree
Dimensions:	79 x 60 x 193mm
Weight:	410g (not include battery)

Pre-production specifications.



Ares II
Flash Trigger

Odin Z OS STRATO II RECEIVER 16 CHANNELS 4 GROUPS 150 METERS RANGE

16 Channels of Awesomeness

Phottix's budget-friendly flash trigger system – the Phottix Ares II, boasts the latest technology and is perfect for manual shooting with studio lights or hot shoe flashes.

Features:

- Transmitter and Receiver with LCD display
- 16 Channels (Strato II compatibility on channels 1-4)
- 4 Groups, A-D
- User programmable Digital ID Code
- Compatible with other Phottix products*

SKU: 89550 Phottix Ares II Flash Trigger Set
SKU: 89552 Phottix Ares II Flash Trigger Transmitter
SKU: 89553 Phottix Ares II Flash Trigger Receiver



Ares II Flash Trigger Transmitter



Ares II Flash Trigger Receiver



Juno Transceiver Flash



Your new favorite "old school" chum

Phottix has spent a lot of time focused on being cutting-edge with the newest and most innovative technologies. We focused this innovative mindset on a powerful yet easy-to-use manual hot shoe flash.

The result: The Phottix Juno.

Features:

- GN 58 Manual Hot Shoe Flash
- Adjustable over 8 stops, in 1/3 stop increments
- Compatible with most major camera systems
- Built-in Phottix Ares II Transmitter and Receiver
- 1/4" x20 Mounting Lug

SKU: 80363 Phottix Juno Transceiver Flash SKU: 80365 Phottix Juno Ares II Combo
SKU: 80364 Phottix Juno "Ready to Go" Kit SKU: 80366 Phottix Juno Ares II Double Pack



Aion™ Wireless Timer and Shutter Release



Timer Functions

- Self, interval and long exposure timers
- Number of frames setting
- Auto-bracketed timer setting for HDR photos

Shutter functions

- Two-stage shutter button for AF and shutter release
- Instant, continuous 5 shot, 2 second delay and bulb shutter release mode.

Cables included:

- N8 (Nikon 10-pin remote terminal)
- N10 (Nikon DC-2 cable)
- C6 (Canon E3 type)
- C8 (Canon N3 type)
- S8 (Sony Multi-terminal)

- N8
- N10
- C6
- C8
- S8

Technical Specs:

Frequency:	2.4 GHz
Range:	60 m
Timer Functions:	Self, long exposure, interval, number of frames
Shutter Release Function:	Instant, continuous 5 shot, 2 second delay, or bulb modes

SKU: 16373 Phottix Aion Wireless Timer and Shutter Release (all cables)

Take wireless triggering to the next level.

The Phottix Aion Wireless Timer and Shutter Release takes wireless triggering to the next level. The revolutionary wireless/wired timer and shutter release offers photographers an amazing number of triggering options, including auto-bracketing for HDR.

Cables for popular Canon, Nikon and Sony cables are included - making this system perfect for photographers that use more than one system.

What does the Phottix Aion offer?

- Timer and Long Exposure Functions
- Shutter Release Functions
- Wired or wireless operations
- 2.4 GHz frequency
- 60m range

Taimi Digital Timer Remote



Many solutions. One box

The Phottix Taimi includes interchangeable shutter cables for popular Canon, Nikon and Sony camera systems – Perfect for photographers shooting with more than one camera system.

Shutter Functions

The Phottix Taimi offers a number of new shutter release functions beyond its timer functions. It can operate as a wired shutter release with single and continuous shot modes with delay and bulb modes.

Cables included:

- N8 (Nikon 10-pin remote terminal)
- N10 (Nikon DC-2 cable)
- C6 (Canon E3 type)
- C8 (Canon N3 type)
- S8 (Sony Multi-terminal)

- N8
- N10
- C6
- C8
- S8

Technical Specs:

Timer Functions:	Self, long exposure, interval, Exposure count setting
Wired Shutter Release Function:	Single and continuous shot modes with delay and bulb modes

SKU: 18300 Phottix Taimi Timer Remote (all cables)

The Phottix Taimi Digital Timer – Phottix's all-in-one digital timer and wired remote. The Taimi includes cables for most popular camera systems.

Features:

- All-in-one digital timer
- Interval, long exposure and number of frames functions
- Wired shutter release functions including single and continuous shot modes with delay and bulb modes
- Interchangeable cables for popular Canon, Nikon and Sony cameras included
- Great for low-light and astro-photography



Jiggie Alejandrino
Team OSS, Philippines
www.jiggiealejandrino.com

"Light is light, whether it be a flash or continuous light. This was shot using the Phottix Video LED light, colour temperature of the light was set at 3500K to Mimic the colour of the sunset. Gorgeous soft light in such a small package."



Nuada R3 / S3 / S / P Video LED Light

- COLOR RENDERING INDEX CRI 95+
- TEMPERATURE CONTROL
- POWER CONTROL
- BATTERY POWERED
- AC POWER

The Phottix Nuada Video Light Series – affordable soft panel lighting for photographers or videographers.

Features:

- Softlight Panel Design
- Excellent color rendering - CRI 95+
- Digital Power and Temperature Control
- 4 sizes and styles
- Battery and AC Powered

SKU: 81421 Phottix Nuada S3 Video LED Light
SKU: 81431 Phottix Nuada R3 Video LED Light
SKU: 81420 Phottix Nuada S Video LED Light
SKU: 81430 Phottix Nuada P Video LED Light



Nuada Video LED series Technical Specs:

Model:	Phottix Nuada S3	Phottix Nuada R3	Phottix Nuada P	Phottix Nuada S
Color Rendering Index (CRI):	≥ 95	≥ 95	≥ 95	≥ 95
Color Temperature (adjustable):	3200K~5600K	3200K~5600K	3300K~5600K	3300K~5600K
Maximum Brightness:	850Lux @ 1m	1100Lux @ 1m	830Lux @ 0.5m	830Lux @ 0.5m
Power:	35W	40W	16.2W	15W
Battery:	Compatible NP Series x 2	V-mount / NP Series with adaptor	Compatible NP Series	Compatible NP Series
Battery Life: 5600K at Max Power	2 x NP-F550 (7.4V 2000mAh) 45min 2 x NP-F750 (7.4V 2000mAh) 110min 2 x NP-F970 (7.4V 2000mAh) 175min	2 x NP-F550 (7.4V 2000mAh) 40min 2 x NP-F750 (7.4V 2000mAh) 95min 2 x NP-F970 (7.4V 2000mAh) 150min 1 x V Battery (14.4V 95Wh) 130min	1 x NP-F550 (7.4V 2000mAh) 80min 1 x NP-F750 (7.4V 4600mAh) 225min 1 x NP-F970 (7.4V 6600mAh) 320min	1 x NP-F550 (7.4V 2000mAh) 80min 1 x NP-F750 (7.4V 4600mAh) 260min 1 x NP-F970 (7.4V 6600mAh) 450min
AC/DC adaptor:	100-240VAC	100-240VAC	100-240VAC	100-240VAC
Dimensions:	376 x 266 x 25mm	428 x 433 x 33mm	255 x 100 x 30mm	192 x 128 x 30mm
Weight :	1170g	1520g	290g	260g



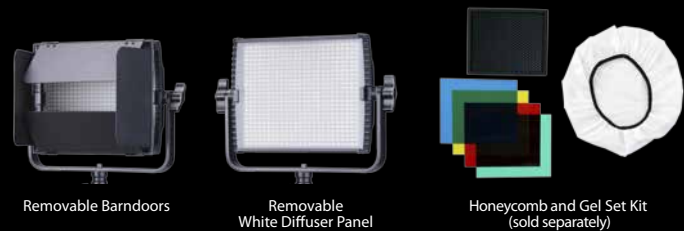
Kali600 Studio LED

- COLOR RENDERING INDEX CRI 95+
- TEMPERATURE CONTROL
- POWER CONTROL
- BATTERY POWERED
- AC POWER

The Phottix Kali Series - Phottix line-up of LED panels for video or still photography. For use on-location or in the studio

Features:

- Excellent color rendering - CRI 95+
- Digital Power Control: 10% - 100%
- Digital Color Control: 3300K – 5600K
- Uses 2 Sony-compatible batteries or AC Adapter



81440 Phottix Kali600 Studio LED
20900 Phottix Kali600 Honeycomb and Gel Set Kit

The Phottix Kali600 features a maximum brightness of 3000Lux (36W). Being both mains and battery powered it can be used in the studio or on-location. The Kali600 offers power and color temperature control – on-board, and via a wireless radio remote. Barndoors, white diffuser panel and AC Adapter are included.



Kali600 Studio LED Technical Specs:

SKUs / Model:	Phottix Kali600 Studio LED
Color Rendering Index (CRI):	≥ 95
Color Temperature (adjustable):	3300K~5600K
Maximum Brightness:	3000Lux @ 1m
Power:	36W @ full power
Battery:	2 x Compatible NP Series (NP-F550 / 750 / 960)
Battery Life:	2 x NP-F550 (7.4V 2000mAh) 90min 2 x NP-F750 (7.4V 4600mAh) 240min 2 x NP-F970 (7.4V 6600mAh) 3600min
5600K at Max Power	
Remote Control Range:	>50m
Dimensions:	242mm x 191mm x 42mm (9.5" x 7.5" x 1.7")
Weight:	1340g (not include battery / barndoor)



81441 Phottix Kali150 Studio LED

1:1 Actual Size

Kali150 Studio LED

- COLOR RENDERING INDEX CRI 95+
- TEMPERATURE CONTROL
- POWER CONTROL
- BATTERY POWERED
- AC POWER

The Phottix Kali150 Studio LED is a compact and powerful light for still and video photography. It uses the latest in flicker-free LED technology, making it portable, durable and easy-to-use.

Features:

- Long-life, Low-Heat LEDs
- Durable one-piece aviation-grade Aluminum shell
- Excellent color rendering - CRI 95+
- Adjustable brightness and color temperature
- Compatible NP Series Battery / AC Power Modes



The pocket-sized Phottix Kali150 features 1000Lux of power in a durable aviation-grade aluminum shell. Both brightness and color temperature can easily adjusted. The Kali150 is powered by Sony-compatible NP Series batteries for use on-the-go, or by AC Mains power when on-location. Using the attached Barndoors, you can better control and craft the light.



The Kali150 can be mounted on three sides to your favorite accessory using a 1/4" threaded lug. A cold shoe mount is included for using the Kali150 on your favorite, DSLR, Mirrorless or Video camera.

Kali150 Studio LED Technical Specs:

Model:	Phottix Kali150 Studio LED
Color Rendering Index (CRI):	≥ 95
Color Temperature (adjustable):	3200K~5600K
Maximum Brightness:	1000Lux @ 0.5m
Power:	15W @ full power
Battery:	Compatible NP Series (NP-F550 / 750 / 960)
Battery Life:	1 x NP-F550(7.4V 2000mAh) 75min 1 x NP-F750(7.4V 4600mAh) 150min 1 x NP-F970(7.4V 6600mAh) 210min
5600K at Max Power	
Dimensions:	145mm x 95mm x 22mm
Weight:	346g (without battery / with barndoors)



- your **LED**
- your **POWER BANK**

Phottix M180 LED LIGHT



COLOR
RENDERING INDEX
CRI 96+



**TEMPERATURE
CONTROL**



**POWER
CONTROL**



**POWER BANK
DC OUTPUT**



**BUILD IN
RECHARGE
BATTERY**

The Phottix M180 LED Light is a must-have accessory for smart phone users and on-the-go content creators. The attractive ultra-thin design paired with a 180 bright high-performance LEDs is perfect for anyone that needs extra light for photos, video, vlog or live-streams. Easy-to-use the Phottix M180 is made for people on-the-go being both water resistant and shock proof. Drop it in your bag or pocket and head out for the day, or an adventure.

What's Included:

- M180 LED Light
- Mini USB to USB Cable
- Micro USB Recharging Cable
- Metal Cold Shoe Mount
- Carrying Bag



81416 Phottix M180 LED Light



The Phottix M180 LED Light features:

- LED Light and Power Bank perfect for smart phones
- Ultra-thin and Pocket-sized: 151 x 80 x 9.8mm
- Powerful with 180 x 120degree LEDs - CRI 96+
- Adjustable brightness and colour temperature 3200K - 5600K
- Power Bank with Mini USB DC Output: 5V 2A Mini USB
- Built-in Rechargeable Battery: 4040 mAh, 3.7 V
- Made from attractive Charcoal Black Aluminium alloy

The Phottix M180 LED Light is also a Power Bank. Charge your devices via Mini USB from the 4040 mAh, 3.7V battery. Charge the M180 in your downtime with USB C or USB Micro cables. Never be caught without power or light. Whether shooting weddings, interviews, portraits, videos, macro shots - with your phone or camera the Phottix M180 LED Light is your perfect companion.

The Phottix M180 LED Light Technical Specs:

Model:	81416 Phottix M180 LED Light
Color Rendering Index (CRI):	> 96
Color Temperature (adjustable):	3200K~5600K
Maximum Brightness:	1600Lux @ 0.5m
Power:	12W @ full power
Battery:	Build in battery: 3.7V 4040mAh
Battery Life	90min
5600K at Max Power:	
Recharge / External power input:	5V 2A Micro USB / USB-C
Recharge time	about 4hrs (5V 2A)
DC output:	5V 2A Mini USB
Dimensions:	151 x 80 x 9.8mm
Weight:	180g



Raja Quick-Folding Softbox

Softboxes are a must-have light shaper. Want to harness light, bend it to your will and make it your servant? Nothing is better than a softbox. They provide for countless looks and possibilities – making your photographic potential limitless.

The Phottix Raja series features:

- Heavy-duty construction
- Uses Phottix's Heat resistant SL Tech material
- Easy to assemble
- 8 sizes and styles
- Swapable speed rings for popular lighting brands
- Travel Bag included



Raja Deep Quick-Folding Softbox

Why Deep?

Deep Softboxes are loved by professional photographers - and for good reason: They produce a more directional light with greater contrast than traditional softboxes – with more even illumination. They are versatile – offering different looks by adding or subtracting the baffle and/or diffuser.

The Phottix Raja series opens like an umbrella and is ready to use in seconds (yes, seconds). No anxiety. No frustration. No “questionable” language. Pop it open, add the baffle, diffuser and grid – mount on your studio light.

8 sizes and styles of Phottix Raja Softbox Models

- 1) 82721 Phottix Raja Quick-Folding Softbox 65cm (26")
- 2) 82723 Phottix Raja Deep Quick-Folding Softbox 60cm (24")
- 3) 82724 Phottix Raja Deep Quick-Folding Softbox 80cm (32")
- 4) 82722 Phottix Raja Quick-Folding Softbox 105cm (41")
- 5) 82727 Phottix Raja Quick-Folding Softbox 150cm (59")
- 6) 82720 Phottix Raja Quick-Folding Softbox 60x90cm (24"x35")
- 7) 82726 Phottix Raja Quick-Folding Softbox 80x120cm (32"x47")
- 8) 82725 Phottix Raja Strip Softbox 30x140cm (12"x55")

Licensed under U.S. Patent No. 6,733,145

Phottix Speed Ring Inserts for Raja Series

- 82584 Phottix Speed Ring - Inner Ring For Elinchrom (144mm)
- 82585 Phottix Speed Ring - Inner Ring For Balcar (144mm)
- 82588 Phottix Speed Ring - Inner Ring For Profoto (144mm)

Raja Oval

Quick-Folding Softbox 50x120cm (20"x47")

The Phottix Raja Oval 50x120cm Softbox has been specially designed with features to light groups of people or large areas. The wide size paired with scalloped edges spreads more light over a larger area with less fall off.

Like other models the Raja Oval has the Raja's patented quick set-up design - opening like an umbrella and effortlessly locking into place.

82731 Phottix Raja Oval Quick-Folding softbox 50x120cm (20"x47")



82733 Phottix Raja Mouse Quick-Folding softbox 60x120cm (24"x47")

Raja Mouse

Quick-Folding Softbox 60x120cm (24"x47")

The Phottix Raja Mouse 60x120cm Asymmetric Softbox offers photographers unique features for portrait photographers. With the light source mounted at the top of the softbox it allows for greater illumination of a subject's head and face, with a dramatic fall off over the rest of the subject's body - due to the Raja Mouse's long tail.

Like other models the Raja Oval has the Raja's patented quick set-up design - opening like an umbrella and effortlessly locking into place.

Raja Oval and Raja Mouse also Included are the an inner baffle, outer diffuser, grid and zippered travel bag. An S-Mount speed ring is included and can be easily swapped out for Elinchrom, Balcar and Profoto-compatible Speed Rings (sold separately).

The Phottix Raja series features:

- Heavy-duty construction
- Uses Phottix's Heat resistant SL Tech material
- Easy to assemble
- 10 sizes and styles
- Swapable speed rings for popular lighting brands
- Travel Bag included

Licensed under U.S. Patent No. 6,733,145

Phottix Speed Ring Inserts for Raja Series

82584 Phottix Speed Ring - Inner Ring For Elinchrom (144mm)

82585 Phottix Speed Ring - Inner Ring For Balcar (144mm)

82588 Phottix Speed Ring - Inner Ring For Profoto (144mm)

Photo: Jack Sir
Jacksir.net

Luna II 60

Folding Beauty Dish

The new generation of Phottix Beauty Dishes

The Phottix Luna II 60 Folding Beauty Dish is Phottix's next generation of the popular Phottix Luna series. Like the original Luna - the Luna II makes taking a beauty dish on location easy.

Features:

- Fast set up
- Internal metal supports
- Integrated speed ring
- Compact
- Use a beauty dish or octa softbox



SKU: 82760 Phottix Luna II 60 Folding Beauty Dish (60cm, 24", White)

It folds down and is easier to transport than traditional metal beauty dishes. Great to take on-location. The Luna II features an integrated S-Type speed ring with locking metal supports. The light characteristics of the Luna II are comparable with conventional metal beauty dishes.

The Luna II is the perfect companion to the Phottix Indra series or Phottix hot shoe flashes when mounted on the Phottix Cerberus. The Luna II 60 features a white interior, and diffuser and fabric grid.



Spartan Beauty Dish (50cm and 70cm)



The perfect on-location light modifier, the Phottix Spartan Beauty Dish assembles easily using flexible rods, a huge benefit over the time-consuming setup of traditional octa softboxes.

The white interior produces softer, more even light. Included in the kit are a metal beauty dish "disk", baffle, front diffuser and fabric grid.

The Phottix Spartan comes in two popular sizes—50cm / 20 inches and 70cm / 28 inches – perfect for single subjects and couples. Use with the award-winning Phottix Indra series of studio lights or mount to the Phottix Cerberus Hot Shoe Flash Mount.

Compatible with the following Speed Rings (144mm, 16-Hole) (not included):

- | | | | |
|------------------|------------|---------------|------------|
| • For Bowens | SKU: 82590 | • For Hensel | SKU: 82594 |
| • For Elinchrom | SKU: 82591 | • For Profoto | SKU: 82595 |
| • For Balcar | SKU: 82592 | • For Comet | SKU: 82596 |
| • For Multiblitz | SKU: 82593 | | |

Speed Rings are available separately.

SKU: 82740 Phottix Spartan Beauty Dish (50cm/20", White)
SKU: 82741 Phottix Spartan Beauty Dish (70cm/28", White)



Phottix Solas Softboxes

The Phottix Solas Series of softboxes – your perfect studio partners - light-weight and durable.

Constructed from a new material - SL-Tech – the Solas series are both light-weight and strong. With the standard fire and heat-resistant properties, SL-Tech fabric is both highly reflective to minimize light loss and durable enough to stand up to years of assembly and disassembly without warping or changing shape.

Speed Ring Mounts for Bowens, Elinchrom, Profoto, Multiblitz, Balcar, Hensel and Comet available separately.



Compatible with the following Speed Rings (144mm, 16-Hole) (not included):

- | | | | |
|------------------|------------|---------------|------------|
| • For Bowens | SKU: 82590 | • For Hensel | SKU: 82594 |
| • For Elinchrom | SKU: 82591 | • For Profoto | SKU: 82595 |
| • For Balcar | SKU: 82592 | • For Comet | SKU: 82596 |
| • For Multiblitz | SKU: 82593 | | |

Speed Rings are available separately.

SKU: 82616 Phottix Solas Octagon Softbox with Grid (122cm/48")
SKU: 82617 Phottix Solas Strip Softbox with Grid (35x140cm/14"x55")
SKU: 82618 Phottix Solas Strip Softbox with Grid (40x180cm/16"x71")
SKU: 82619 Phottix Solas Softbox with Grid (91x122cm/36"x48")

EasyUp HD

Umbrella Softboxes

Dramatic Portraits Just add Light

The Phottix Easy-Up HD Umbrella Softbox series was made with portability in mind.

Features:

- folds down like an umbrella
- easy to transport and store
- assembles instantly
- grid included
- great with hot shoe flashes

Perfect for on-location shooting. It folds down like a regular umbrella and expands straight into softbox for instant use, saving time over traditional softboxes which require rods and speed rings for assembly. The recessed-front diffuser allows for more precise positioning and feathering of light. Fabric grid included.



SKU: 82482 Phottix Easy-Up HD Umbrella Softbox with Grid 40x90cm (16"x35")
SKU: 82483 Phottix Easy-Up HD Umbrella Softbox with Grid 40x90cm (16"x35") and H-Mount Plate Kit



SKU: 82494 Phottix Easy-Up HD Umbrella Softbox with Grid 60x90cm (24"x35")
SKU: 82495 Phottix Easy-Up HD Umbrella Softbox with Grid 60x90cm (24"x35") and Varos PRO S Kit



SKU: 82484 Phottix Easy-Up HD Umbrella Octa Softbox with Grid (80cm/32")
SKU: 82485 Phottix Easy-Up HD Umbrella Octa Softbox with Grid (80cm/32") and Varos PRO S Kit



SKU: 82486 Phottix Easy-Up HD Umbrella Extra Large Octa Softbox with Grid (120cm/47")

Hexa-Para

Softboxes

Phottix takes the Deep Octa Softbox to the next level with the Phottix Hexa-Para Softbox series. Coming in two sizes, 120cm/47" and 150cm/59" – the Hexa-Para features sixteen support rods for a unique rounder shape. When paired with a Phottix Indra500 TTL Studio Light, the Hexa-Para provide soft wrap-around light. It works great as a key light or a large fill.

Features:

- Sixteen rod design
- Inner and outer diffuser
- Two sizes
- Unique, soft light
- Perfect as key, fill or background light

Compatible with the following Speed Rings (144mm, 16-Hole) (not included):

- | | | | |
|------------------|------------|---------------|------------|
| • For Bowens | SKU: 82590 | • For Hensel | SKU: 82594 |
| • For Elinchrom | SKU: 82591 | • For Profoto | SKU: 82595 |
| • For Balcar | SKU: 82592 | • For Comet | SKU: 82596 |
| • For Multiblitz | SKU: 82593 | | |

Speed Rings are available separately.



SKU: 82480 Phottix Hexa-Para Softbox 120cm(47")
SKU: 82481 Phottix Hexa-Para Softbox 150cm(59")

Premio

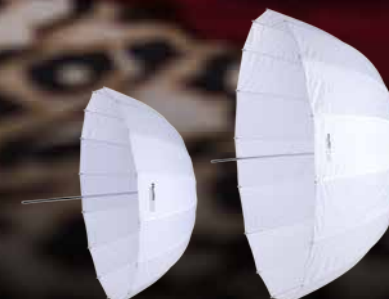
Parabolic Umbrellas Series

The Premio Series feature innovative enhancements, making them both a durable and premium "go-to" lighting modifier.

The umbrellas feature heavy-duty construction, made with fiberglass spokes for cleaner catch-lights and enhanced durability - that will stand up to the rigors of on-location work. The locking mechanism has been redesigned, making it stronger and easier-to-use.

White diffusers are available for the Phottix Premio Reflective models - easily turning them into a large softbox. A black, reflective backing is available for the shoot-through models - helping to better control light spill, as well as putting more light on target.

Phottix Premio Shoot-Through Umbrella Series



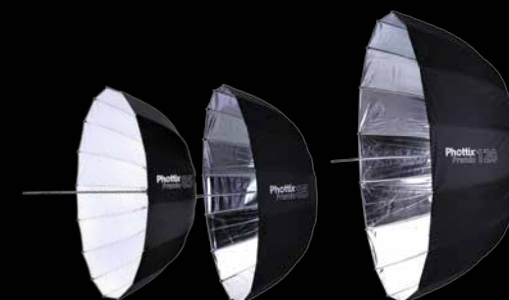
SKU: 85382 Phottix Premio Shoot-Through Umbrella (85cm/33")
SKU: 85383 Phottix Premio Shoot-Through Umbrella (120cm/47")

Phottix Premio Black Backing for Shoot-Through Umbrellas



SKU: 85385 Phottix Premio Black Backing (for 85cm/33")
SKU: 85386 Phottix Premio Black Backing (for 120cm/47")

Phottix Premio Reflective Umbrella Series



SKU: 85372 Phottix Premio Reflective Umbrella (85cm/33") - Silver and Black
SKU: 85373 Phottix Premio Reflective Umbrella (120cm/47") - Silver and Black
SKU: 85377 Phottix Premio Reflective Umbrella (85cm/33") - White and Black

Phottix Premio Diffuser for Reflective Umbrella



SKU: 85375 Phottix Premio Diffuser (for 85cm/33" Reflective Umbrella)
SKU: 85376 Phottix Premio Diffuser (for 120cm/47" Reflective Umbrella)



Umbrellas Series



Two Layers Detachable Reflective/Shoot-through Umbrella
The best of both worlds. This white shoot-through umbrella has a black cover that turns it into black/white reflective umbrella. Two very different effects from one umbrella.
SKU: 85420 101cm (40")



Reflective Studio Umbrella
It is black outside and silver inside, producing beautiful light with more contrast than a white umbrella.
SKU: 85330 84cm (33")
SKU: 85340 101cm (40")



Double-Small Folding Shoot-Through Umbrella
Super-compact double-folding shoot-through Umbrella – perfect for the on-the-go photographer. White exterior, interior.
SKU: 85361 91cm (36")



White Photo Studio Diffuser Umbrella
White exterior and interior - the essential standard studio umbrella.
SKU: 85350 84cm (33")
SKU: 85360 101cm (40")



Double-Small Folding Reflective Umbrella
Super-compact double-folding reflective umbrella—perfect for the on-the-go photographer. Black exterior, silver interior.
SKU: 85341 91cm (36")



Reflective Studio Umbrella
Black Exterior, white interior for softer light.
SKU: 85370 101cm (40")



Shoot-Through Softbox Studio Umbrella
A shoot-through umbrellas with an attached black backing. Limit light spills and more efficient light use.
SKU: 85380 101cm (40")



Reflective Softbox Studio Umbrella
An easy to use umbrella softbox. This umbrella opens into a 101cm circular softbox. Easy to transport and store.
SKU: 85390 101cm (40")

Phottix® Saldo

Photo: Doug Hansgate
Amptudiosny.com

Saldo

Light Stand Series

Unique a Head-Turning Two-Tone
Chrome and Black look



- Maximum Height
- Collapsed Length
- Supported Weight
- Weight
- Thread

Saldo Light Stands Series

Featuring a head-turning two-tone chrome and black look. The Saldo series offer the same great durability and affordability that have become Phottix trademarks.

1

- 62cm
- 41cm
- 1.5kg
- 0.9kg
- 1/4" & 5/8"

SKU: 88208
Saldo 62 Light Stand (62cm/24")

2

- 200cm
- 55cm
- 1.5kg
- 1.11kg
- 1/4"

SKU: 88207
Saldo 200 Compact Light Stand (200cm/79")

3

- 240cm
- 62cm
- 3.0kg
- 1.6kg
- 1/4"

SKU: 88209
Saldo 240 Light Stand (240cm/94")

4

- 280cm
- 83.5cm
- 5.0kg
- 1.95kg
- 1/4" & 5/8"

SKU: 88211
Saldo 280 Air Cushion Light Stand (280cm/110")

5

- 395cm
- 114cm
- 8.0kg
- 3.0kg
- 1/4" & 5/8"

*Sandbag included
SKU: 88221
Saldo Studio Boom Light Stand (395cm/156")

6

- 160cm (Length)
- 1/4" & 3/8"

*Sandbag included
SKU: 88197
Saldo 160 Light Stand Boom Arm (160cm/63")

7

SKU: 83431
Saldo Backdrop Stand Kit (2.8x3.2m)

- Support muslin and paper backdrop up to 3m wide
- 2 x Saldo 280 Air Cushion Light Stand (280cm/110")
- Comes with carrying Bag
- 4 sections removable horizontal bar (80cm each)

e48 Light Stand Extension

Phottix e48 Light Stand Extender is perfect for the on-location photographer that needs a “jack of all trades” accessory. With a 5/8” Lug the e48 can be mounted vertically or horizontally on a light stand. Get an extra 48cm in height in when used with the Phottix Padat 200 Compact Light Stand. The e48 can also be a hand-held boom for a flash or microphone. A 3/8” mount with 1/4” male thread holds a variety of accessories in place.

SKU: 88214 Phottix e48 Light Stand Extension (48cm/18.9”)

Cerberus Multi Mount Holder

The Phottix Cerberus System was designed to safely use hot shoe flashes with softboxes.

Compatible with:

- Phottix Softboxes with Bowens S Mount
- Phottix Transfolder Series
- Elinchrom Speed Ring Mount

SKU: 87301 Phottix Bowens Speed Ring for Phottix Cerberus Multi Mount
SKU: 87302 Phottix Elinchrom Speed Ring for Phottix Cerberus Multi Mount
SKU: 87303 Phottix Griffin Universal Flash Mount
SKU: 87305 Phottix Cerberus Multi Mount Kit for Transfolder Softbox
SKU: 87307 Phottix Cerberus Multi Mount Holder
SKU: 87308 Phottix Cerberus Multi Mount with Bowens Ring

Multi Boom Flash Bracket

The compact Phottix Multi Boom 16” Flash Bracket mounts into a standard umbrella swivel, holds two flashes on axis with an umbrella or umbrella-style softbox.

SKU: 87520 Phottix Multi Boom (41cm/16”) Flash Bracket
SKU: 87535 Phottix Multi Boom (71cm/28”) Flash Bracket



Varos Pro Multi-Function Flash Shoe Umbrella Holder

The Varos Pro series is 300% stronger than previous versions and features Aluminum alloy body with a metal coldshoe, 3/8" and 1/4" female threaded insert, male 3/8" and 1/4"s crews included.

The Teardrop-shaped umbrella mount accepts umbrella with shafts 7-10mm and the 8 degrees slanted umbrella mount allows more light to hit the center of the umbrella. The Patented umbrella clamp has been redesigned to offer 300% more locking force while keeping umbrella shafts more secure and damage free.

The Varos Pro Mini offers patented features and smaller footprint design. The Aluminum alloy body with metal flash coldshoe is perfect on-location or in the studio.

SKU: 87201 Varos Pro Mini Flash Umbrella Mount
SKU: 87200 Varos Pro S Multi-Function Flash Shoe Umbrella Holder



The Phottix Varos Pro Family Technical Specs:

Model:	Mini	S	M	BG
SKUs:	87201	87200	87199	87198
Material:	Aluminum alloy body with metal flash cold shoe			
Mount:	Metal cold shoe 5/8" Lug	Metal cold shoe 5/8" (16 mm) with 3/8"-16 and 1/4-20" threaded female insert 5/8" (16 mm) with 3/8"-16 and 1/4-20" threaded male insert		
Load Capacity:	18 Kg (40 lb)	25 kg (55 lb)	28 kg (62 lb)	30 kg (66 lb)

SKU: 87199 Varos Pro M Multi-Function Flash Shoe Umbrella Holder
SKU: 87198 Varos Pro BG Multi-Function Flash Shoe Umbrella Holder

The Phottix INTERNATIONAL PRO TEAM

Professionals capturing perfect moments,
beauty and art with Phottix gear.



Jiggie Alejandrino
Country : Philippines
Jiggiealejandrino.com



William Barrington-Binns
Country : UK and Thailand
Williambb.com



Garry Black
Country : Canada
Garryblack.com



Swan Yee
Country : Myanmar
Facebook/doubleflashmdy



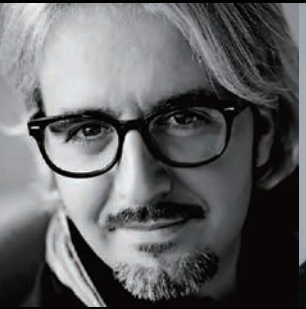
Erich Caparas
Country : USA
Erich3d.com



Chakrit Chanpen
Country : Thailand
Chakritchanpenportfolio.net



Steve Lance Lee
Country : Malaysia
Facebook:stevellancelee



Salvatore Dimino
Country : Italy
Salvatorodimino.it



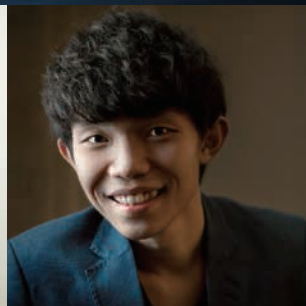
Dheny Patungka
Country : Indonesia
Dhenypatungka.com



Frank Doorhof
Country : Netherlands
Frankdoorhof.com



Barrie Downie
Country : UK
Barriedownie.com



Keda.Z Feng
Country : Malaysia
Kedaz.com



Damjan Fiket
Country : Croatia
Reflexionweddings.com



Mike Fulton
Country : USA
Tricoastphoto.com



Sharron Goodyear
Country : UK
Goodyearphotography.co.uk



Don Hales
Country : USA
Donhalesphotography.com



Doug Hansgate
Country : USA
Hansgate.com



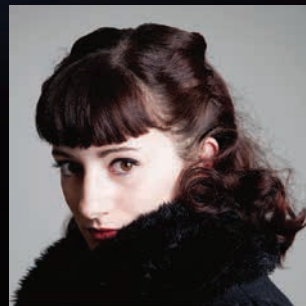
James Hays
Country : USA
Enchantedseniors.com



Jayesunn Krump
Country : USA
Jkrump.com



CM Leung
Country : Hong Kong, China
Cmleung.com



Sara Lando
Country : Italy
Saraland.com



Greg Moment
Country : Poland
Moment.com.pl



Ian Munro
Country : UK
ianmunrophotography.co.uk



Steven Neeson
Country : Northern Ireland
Stevenneeson.co.uk



Nikos Pekridis
Country : Greece
Photopek.com



Dennis Pike
Country : USA
Dennispikphoto.com



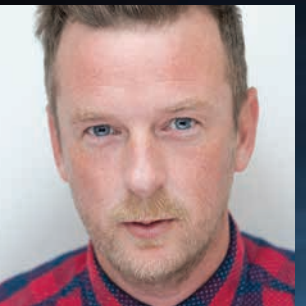
Robert Pugh
Country : UK
Rpphotographybydesign.co.uk



Matthew Rycraft
Country : UK
Matthewrycraft.co.uk



Brian Hodges
Country : USA
Imagecraftersmedia.com



Lee Searle
Country : UK
Leesearle.com



Felix So
Country : Hong Kong, China
Felixso.com



Marian Sterea
Country : Romania
Mariansterea.ro



Maggie Sung
Country : Taiwan
Maggiesung.com



Lito Sy
Country : Philippines
Litosy.com



Roger Tan
Country : Malaysia
Facebook.com/roger.tan.7



Tracey Taylor & Dee Green
Country : Japan
37framesphotographyblog.com



Baris Varol
Country : Turkey
Barisvarol.com.tr



Mark Rigsby
Country : USA
Mdrfoto.com



Fred Windholz
Country : USA
Windholzphoto.com



Michael Zelbel
Country : Germany
Zelbel.com

The Phottix INTERNATIONAL PRO TEAM



Jeremy Chan

Country : USA
Jezaphoto.com



Engin CITAK

Country : Germany
Simurgdigital.com



Henry Chong

Country : Malaysia
Enyamareine.com



Tiger Cho

Country : Malaysia
Enyamareine.com



Dominique Agius

Country : France
Da-focus.com



Chris Huang

Country : Taiwan
We-sweet.com



Raven Tsoi

Country : Hong Kong, China
Facebook@raventsoiphotography



Jack Ngai

Country : Hong Kong, China
Jacksir.net



Ali G

Country : Hong Kong, China
Aligstudios.com



Jeff Voon

Country : Malaysia
Jeffvoon.com



Lestony Lee

Country : Malaysia
Lestonyleephotography.com



Lexis Ow

Country : Australia
Babylikeart.com



Zac Lim

Country : Malaysia
Zaclim.com



Daniel Tam

Country : Hong Kong, China
Danieltam.hk



Tauran Woo

Country : USA
Tauran.com

**Professionals capturing perfect moments,
beauty and art with Phottix gear.**

Phottix®
Phottix.com



PhottixPPA



@phottixjournal



@Phottix



PhottixHQ

Unit 1 & 13, 8/F., Block B, Hoi Luen Ind. Centre, 55 Hoi Yuen Rd, Kwun Tong, Kln, Hong Kong, China.
Tel: +852 2575 0739 | Fax: +852 2572 8207

Sales@phottix.com | Tech@phottix.com